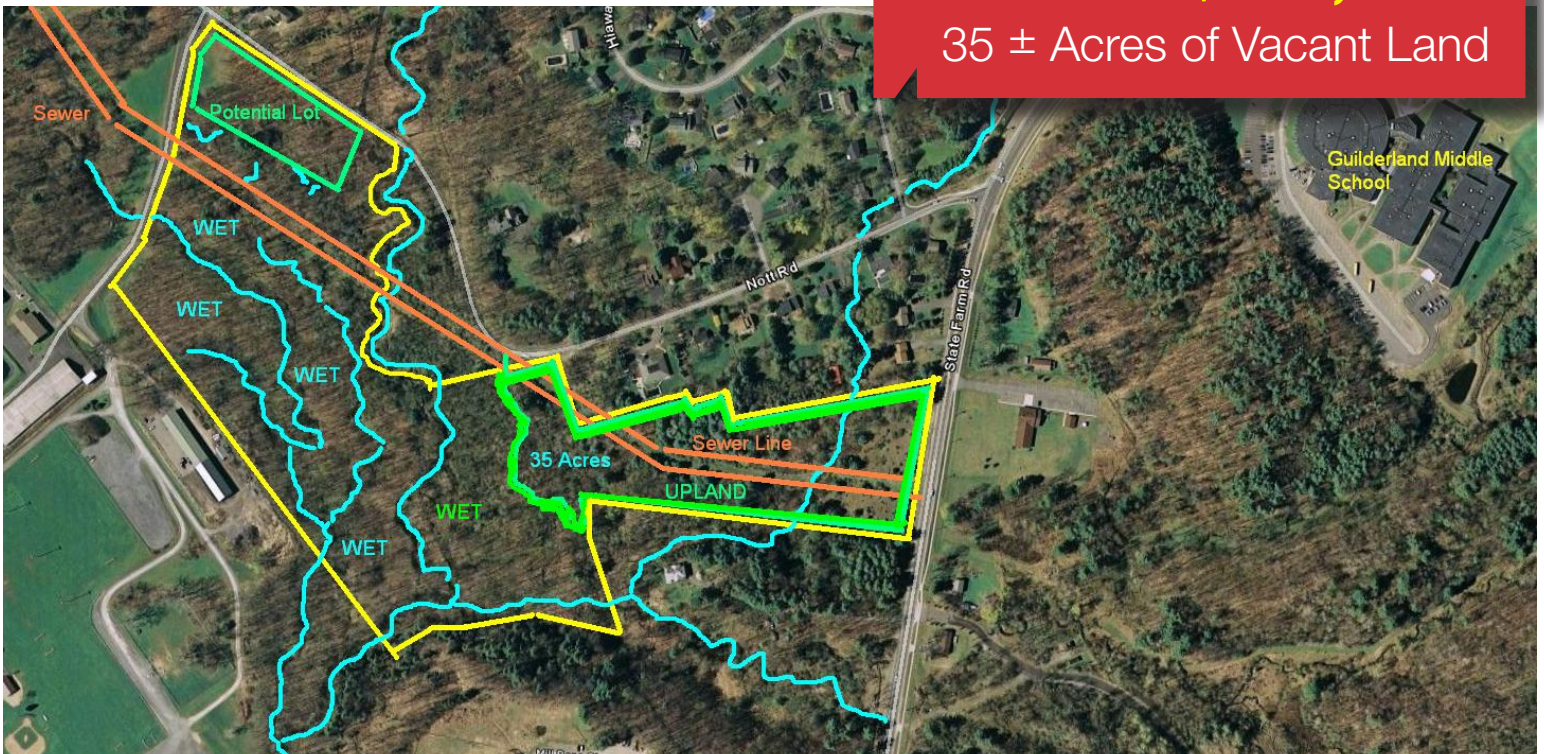


**Price Reduction!**

For Sale **\$225,000**

35 ± Acres of Vacant Land



## 0 Nott Road, Guilderland NY

CIREB MLS # 29000266 Residential MLS #201027601

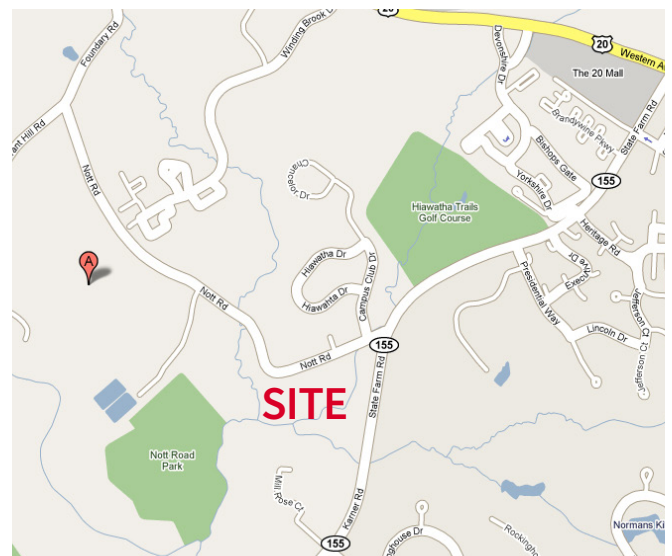
### Property Features

- Potential 4 lot minor subdivision
- 1 mile to Route 20 commercial corridor
- All infrastructure on site or at road
- Sewer hook-up or install septic fields
- Frontage on Nott Road and Route 155
- Taxes: \$3,200 per year
- Zoned RA-3 (Rural Agricultural); 3 acre minimum lot size

**Jim Harder**

Office 518 465 1400 ext. 221  
JHarder@naiplatform.com

Mobile 917 575 0165



14 Corporate Woods Boulevard, Suite 100  
Albany, New York 12211  
+1 518 465 1400  
[naiplatform.com](http://naiplatform.com)

The information contained herein has been given to us by the owner of the property or other sources we deem reliable, we have no reason to doubt its accuracy, but we do not guarantee it. All information should be verified prior to purchase or lease.