

**NAIDESCO**

Retail Space for Lease  
**3,725 – 8,500 SF**



**New proposed parapet 2016**

**6915 S. Lindbergh Blvd.**  
ST. LOUIS, MISSOURI, 63118

For more information:

**Tony Salerno**

314 994 2322 • 314 703 6400 Mobile  
tsalerno@naidesco.com

6915 S. Lindbergh Blvd.



Available Bay(s)

## Property Features

- 3,725 – 8,500 square foot retail bays available
- Excellent visibility from I-55 and S. Lindbergh Blvd.
- Located at signalized intersection
- Highway & Pylon signage available
- Excellent parking
- Potential Building improvements planned for 2016; see rendering below

## Traffic Counts

25,016 VPD on S. Lindbergh Blvd.

100,070 VPD on I-55

Lease Rate:

**\$25.00 per square foot NNN**



## Demographics

U.S. Census	1 Mile	3 Miles	5 Miles
Population	10,141	91,961	200,595
Households	4,627	40,731	87,811
Avg. HH Inc.	\$60,873	\$72,499	\$74,224

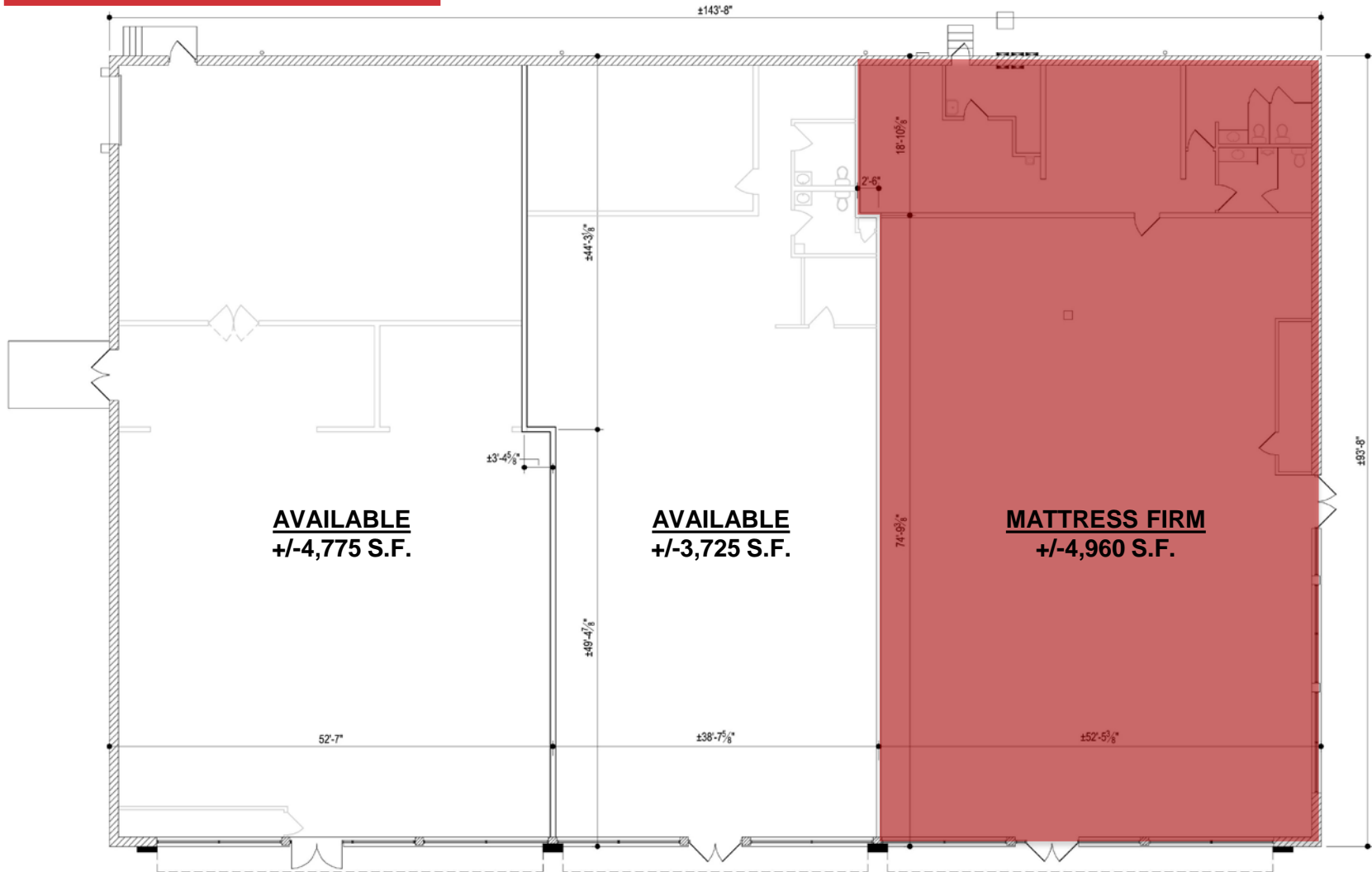
For more information:

**Tony Salerno**

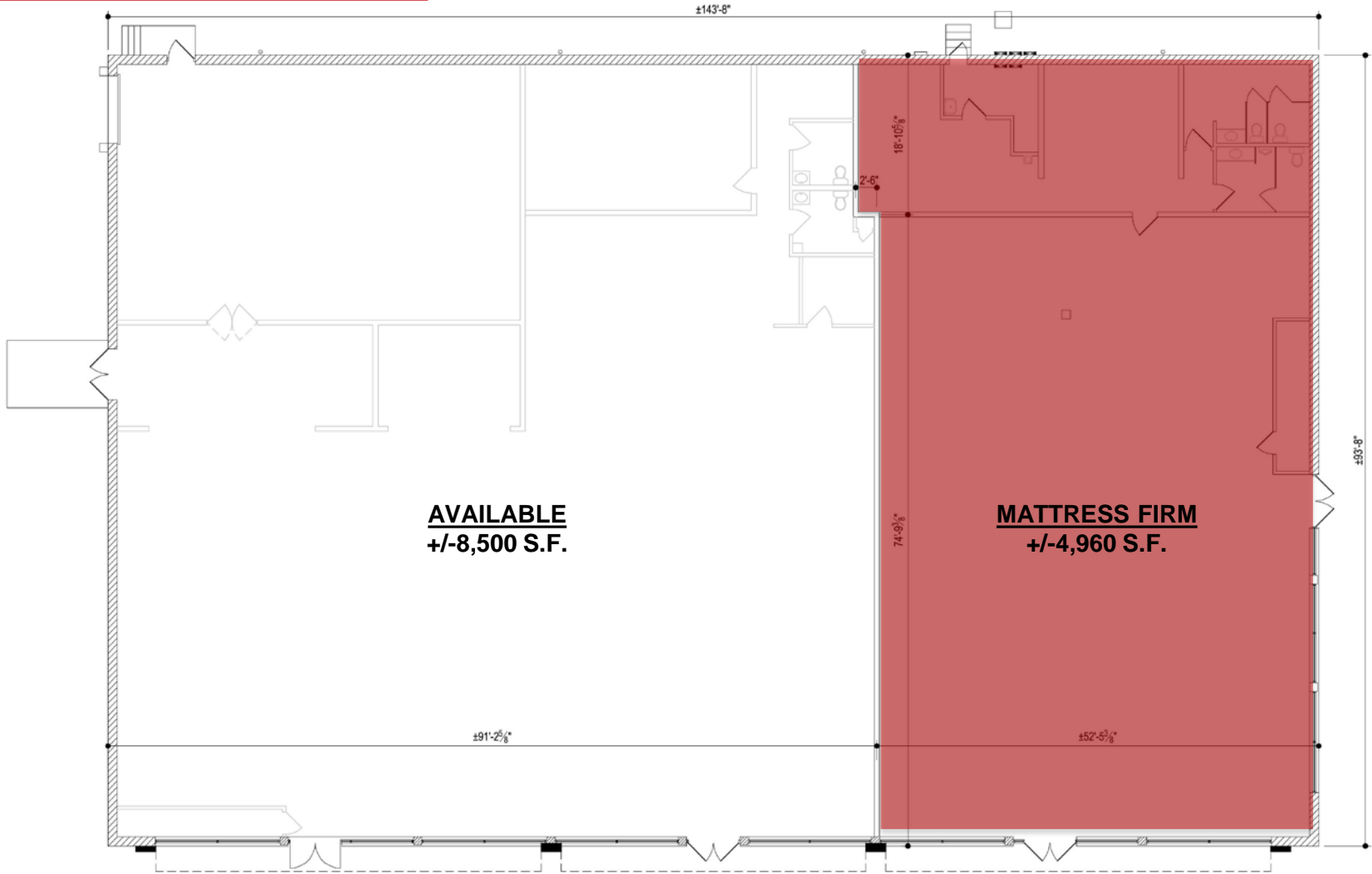
314 994 2322 • 314 703 6400 Mobile

tsalerno@naidesco.com

Possible Demised Site Plan  
3,725 – 4,775 SF



As- Built Site Plan  
8,500 SF





# Area Retailers

