



10 New Karner Road, Guilderland NY

MLS # 201500061

Property Details

- Great Business Location—Excellent exposure & 3 points of access
- Extensive renovations completed on the interior, exterior and site
- 92-car parking on 3 sides of the building
- Gas heat, central air, 600 amp, 3 phase electric
- Signage: Large pylon & on building over doors
- All brand new HVAC, lights, plumbing, and facade
- Average Daily Traffic—42,752 on Rt. 20, 21,400 on Rt. 155
- Nets Approx. \$3.05/SF
- Zoning: General Business - Supports all types of retail and office uses!

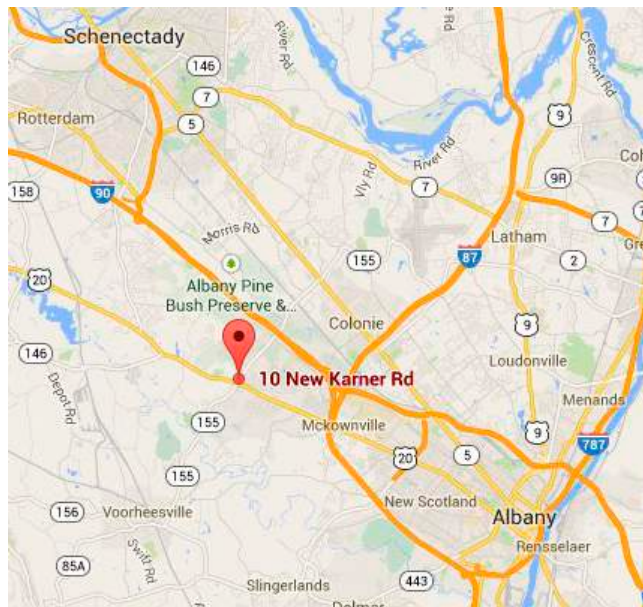
Cory Tyksinski

Office 518 465 1400 ext. 217
CTyksinski@naiplatform.com

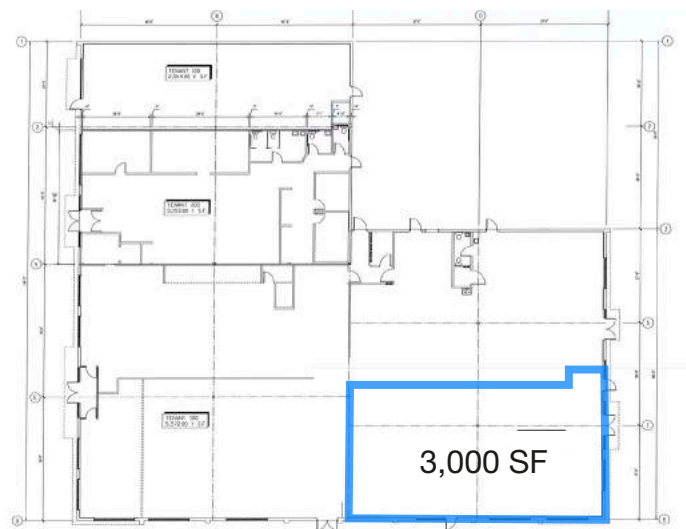
Mobile 518 857 8396

14 Corporate Woods Boulevard, Suite 100
Albany, New York 12211
+1 518 465 1400
naiplatform.com

The information contained herein has been given to us by the owner of the property or other sources we deem reliable, we have no reason to doubt its accuracy, but we do not guarantee it. All information should be verified prior to purchase or lease.



Floor Plan



Directions

Corner of Route 20 & Route 155, next to 1st National Bank of Scotia, across from the Post Office.

Site Map

